

HIGHLIFE® COLLECTION

# JETSETTER® LX



FreshWater®  
Salt System Ready



100% Filtration  
SilentFlo Circulation



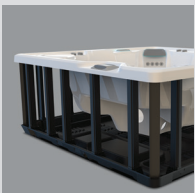
Moto-Massage® DX



Super Energy  
Efficient



Wireless Remote



Polymer Substructure  
& Base Pan



Shown with Alpine White Shell  
and Charcoal Cabinet

<b>People</b>	<b>Seating</b>	<b>Jets</b>	<b>Voltage</b>
3 Seats	Lounge	30 Jets	230 V

## Size

7' x 5'8" x 33" | 213 cm x 173 cm x 84 cm

## Water Care

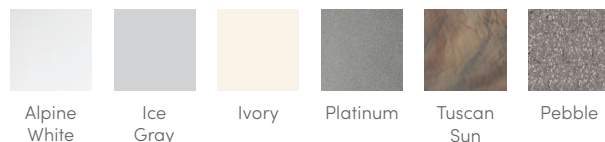
FreshWater® Salt System Ready

# HIGHLIFE® COLLECTION

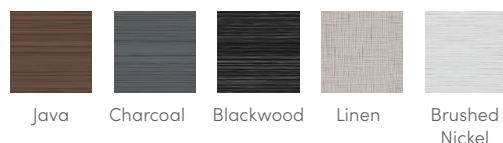
# JETSETTER® LX



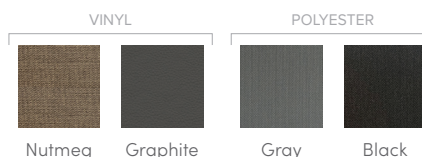
## SHELL COLORS



## CABINET COLORS



## COVER COLORS



## CABINET AND SHELL COLOR OPTIONS\*

Cabinet Colors	Java	Charcoal	Blackwood	Linen	Brushed Nickel
<b>Shell Colors</b>	Alpine White Ice Gray Ivory Tuscan Sun Pebble	Alpine White Ice Gray Platinum Tuscan Sun Pebble	Alpine White Ice Gray Platinum	Alpine White Ivory Tuscan Sun Pebble	Alpine White Ice Gray Platinum

## LEGENDARY MESSAGE

### 30 Personalized-Control Jets

- Moto-Massage® Lounge
- Soothing Stream® Seat
- Precision® Jet Seat

## EASY WATER CARE

- Water Care System** FreshWater® Salt System Ready
- Filtration System** 100% No-bypass Filtration  
Exclusive, High-flow Tri-X® Filters  
Unique, Dual-Action Filtration

## LEADING ENERGY EFFICIENCY

- Jet Pump** Wavemaster® 9000; One-speed, 2.5 HP Continuous Duty, 5.2 HP Breakdown Torque
- Circulation Pump** SilentFlo 5000® for quiet, continuous filtration
- Heater** Titanium No-Fault® 6,000 W / 230 V
- Insulation** Multiple Layers of Foam Insulation; Certified to California Energy Commission (CEC) and APSP 14 energy efficiency standards for portable spas
- Cover** 3.5" to 2.5" tapered, 1.5 lb. density foam core, with hinge seal

## SIZE

**Dimensions** 7' x 5'8" x 33" / 213 cm x 173 cm x 84 cm

## CAPACITY

- Seating Capacity** 3 seats with lounge
- Water Capacity** 250 gallons / 950 liters
- Weight** 515 lbs. / 235 kg dry; 3,125 lbs. / 1,425 kg filled\*\*

## ADDITIONAL FEATURES

- Cover Lifters** CoverCradle®, CoverCradle II, Lift 'n Glide®, or UpRite® (F/B only)
- Steps** Steps are available to match cabinet colors
- Entertainment** Bluetooth® Wireless Sound System (Optional)
- Control System** IQ 2020® with wireless remote control  
230 V / 50 amp, 60 Hz  
(Includes G.F.C.I. protected sub-panel)
- Lighting System** Luminescence® multi-color four-zone

\*No special orders or shell substitutions available. Actual colors and products may vary from print representation. See dealer to verify.  
\*\*Includes water and 3 adults weighing 175 lbs. each.